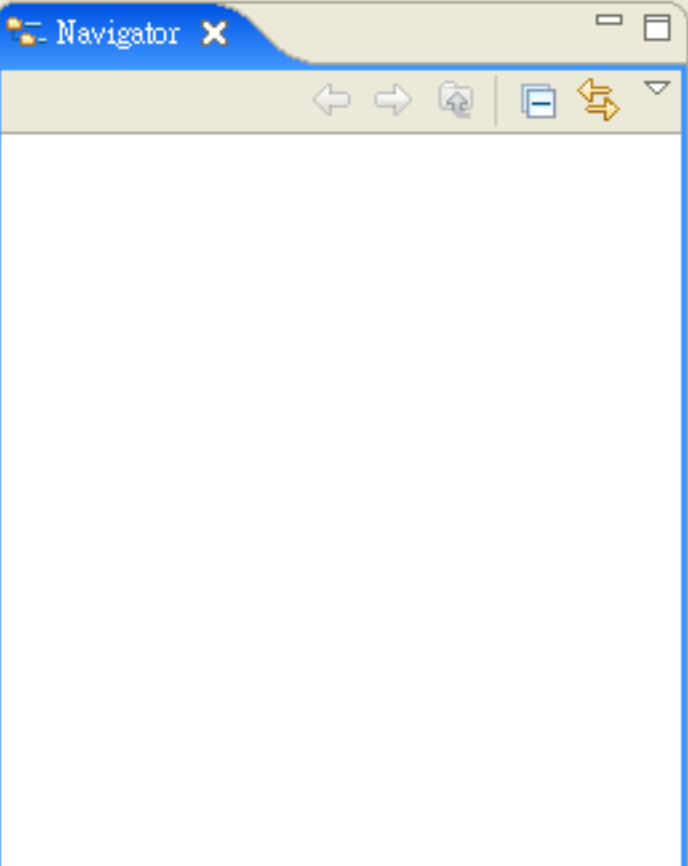


Navigator



Help

- Welcome
- Help Contents
- Search
- Dynamic Help
- Key Assist... Ctrl+Shift+L
- Tips and Tricks...
- Software Updates
- About Eclipse Platform

Resource

- Find and Install...
- Manage Configuration

Outline

An outline is not available.

Tasks

0 items

✓	!	Description	Resource	Path



Feature Updates

Choose the way you want to search for features to install



Search for updates of the currently installed features

Select this option if you want to search for updates of the features you already have installed.

Search for new features to install

Select this option if you want to install new features from existing or new update sites. Some sites may already be available. You can add new update site URLs to the search.



< Back

Next >

Finish

Cancel

Outline

An outline is not available





Update sites to visit

Select update sites to visit while looking for new features.



Sites to include in search:

- Callisto Discovery Site
- The Eclipse Project Updates

New Remote Site...

New Local Site...

New Archived Site...

Edit...

Remove

Import sites...

Export sites...

New Update Site



Name: xmarsh

URL: http://xmarsh.openfoundry.org/update/



OK

Cancel

- Ignore features not applicable to this environment
- Automatically select mirrors



< Back

Next >

Finish

Cancel

Outline

An outline is not available



File Edit Navigate

Navigator

Updates

Search Results

Select features to install from the search result list.

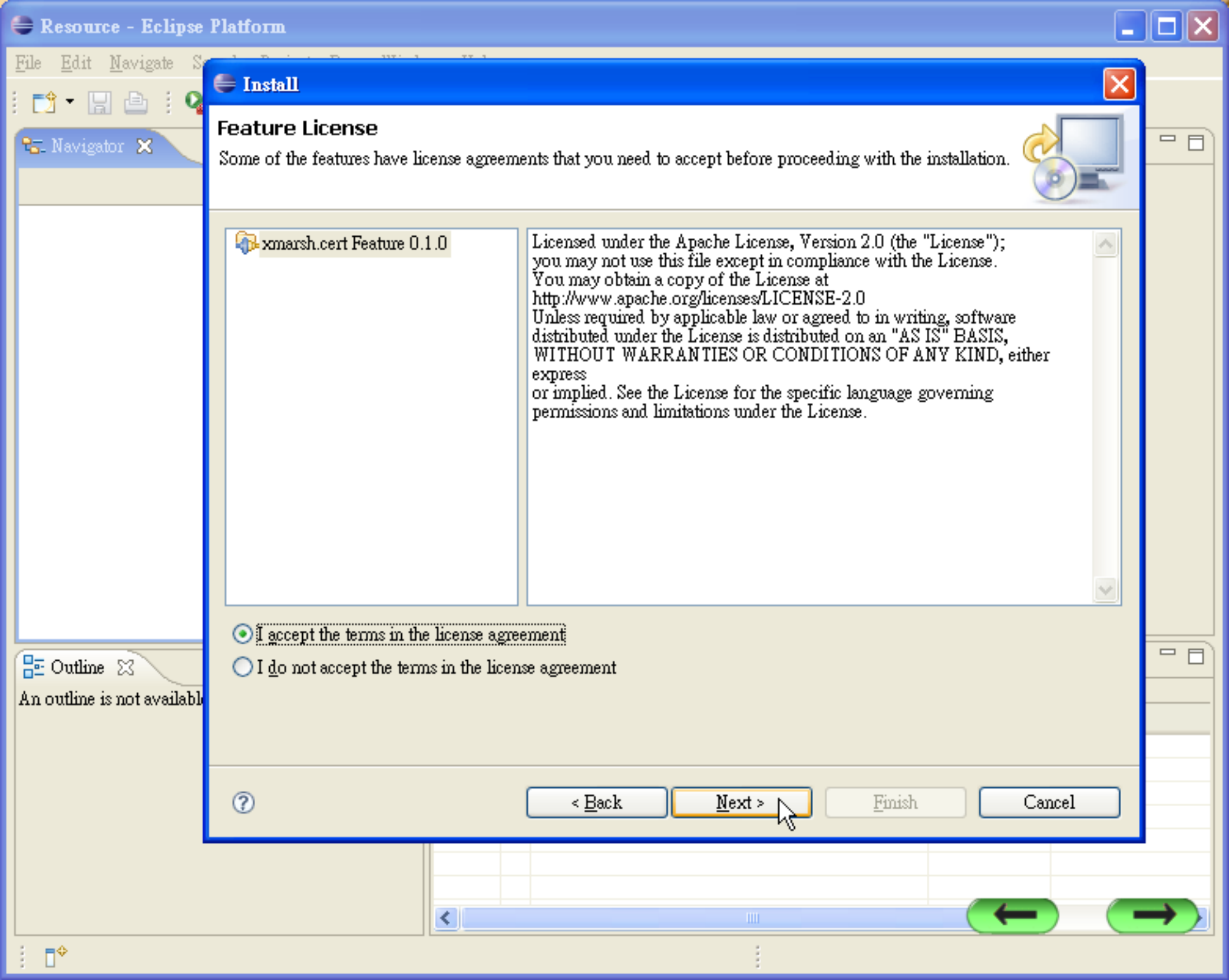
Select the features to install:

- xmars
- xmars.update.service
- xmars.cert Feature 0.1.0

xmars update site

1 of 1 selected.

- Show the latest version of a feature only
- Filter features included in other features on the list




Install

Feature License

Some of the features have license agreements that you need to accept before proceeding with the installation.



 xmmarsh.cert Feature 0.1.0

Licensed under the Apache License, Version 2.0 (the "License"); you may not use this file except in compliance with the License. You may obtain a copy of the License at <http://www.apache.org/licenses/LICENSE-2.0> Unless required by applicable law or agreed to in writing, software distributed under the License is distributed on an "AS IS" BASIS, WITHOUT WARRANTIES OR CONDITIONS OF ANY KIND, either express or implied. See the License for the specific language governing permissions and limitations under the License.

- I accept the terms in the license agreement
- I do not accept the terms in the license agreement

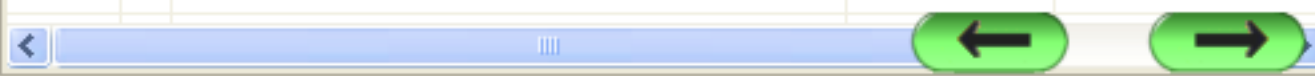


< Back

Next >

Finish

Cancel




Install

Installation

The following features will be installed. You can select a feature and change the location where the feature will be installed.



Features to install:

Feature Name	Feature Version	Feature Size	Installation Directory
 xmarsh.cert Feature	0.1.0	2.18 MB	C:/LIN/PROJECT/eclipse/xmarsh-pl...

Install Location: C:\LIN\PROJECT\eclipse\xmarsh-platform-3.2.1

[Change Location ...](#)

Required space: 2.18 MB
Free space: 210.73 GB



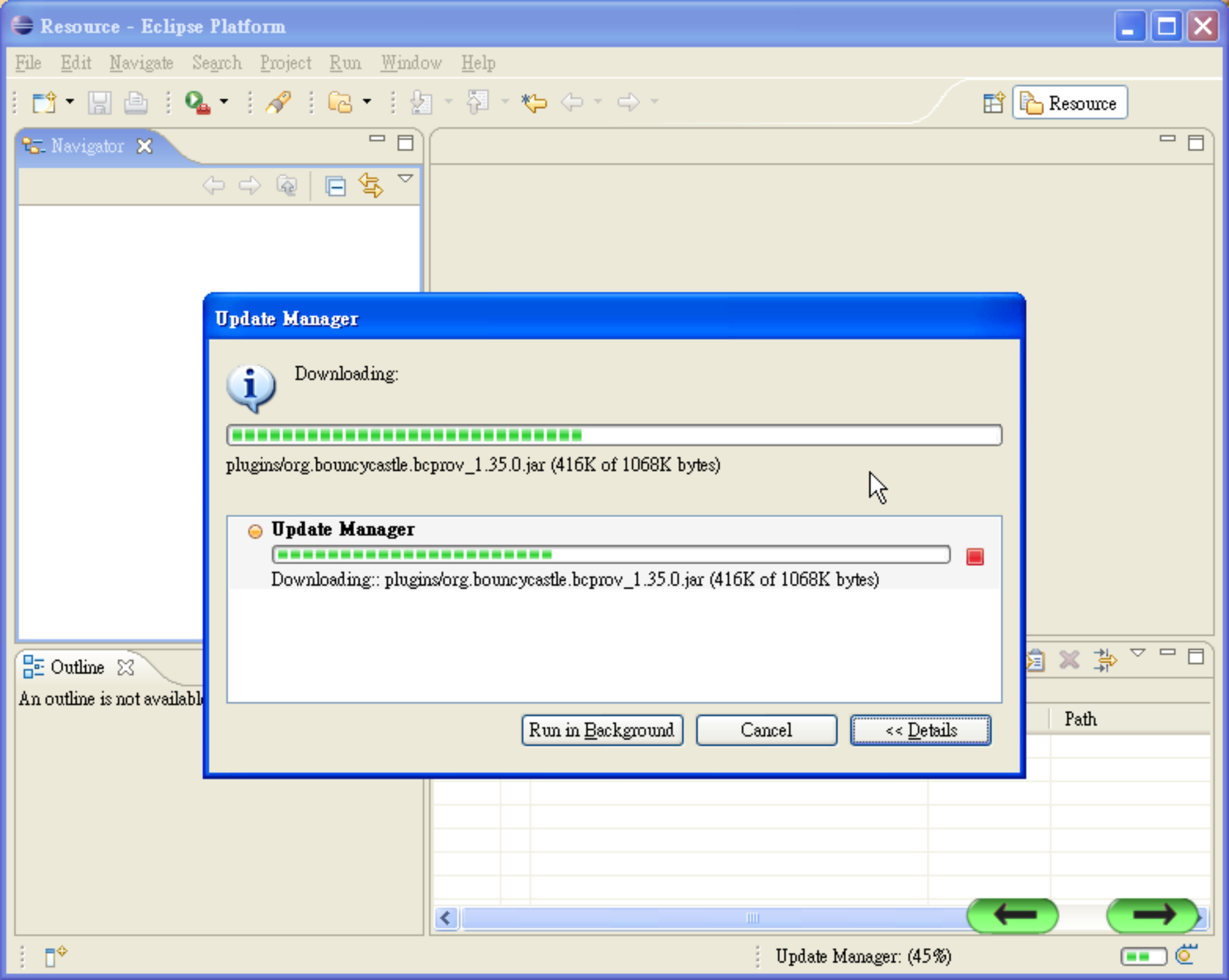
< Back

Next >

Finish

Cancel





Update Manager



Downloading:



plugins/org.bouncycastle.bcprov_1.35.0.jar (416K of 1068K bytes)

Update Manager

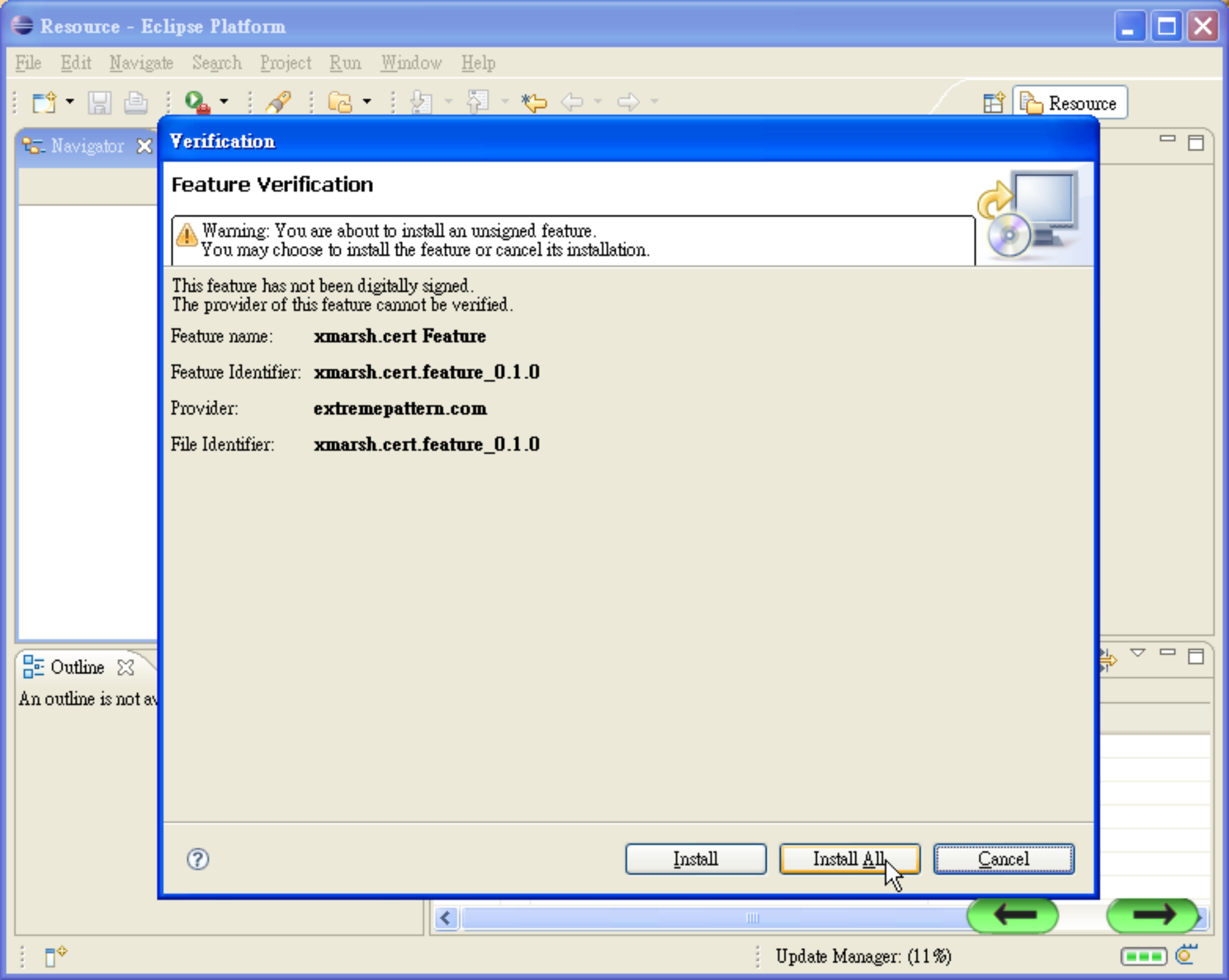


Downloading:: plugins/org.bouncycastle.bcprov_1.35.0.jar (416K of 1068K bytes)

Run in Background


Cancel

<< Details



Verification

Feature Verification

 Warning: You are about to install an unsigned feature.
You may choose to install the feature or cancel its installation.

This feature has not been digitally signed.
The provider of this feature cannot be verified.

Feature name: **xmarsh.cert Feature**
Feature Identifier: **xmarsh.cert.feature_0.1.0**
Provider: **extremepattern.com**
File Identifier: **xmarsh.cert.feature_0.1.0**



Navigator

- New
 - Project...
 - Folder
 - File
 - Untitled Text File
 - Other...
- Copy
- Paste
- Import...
- Export...
- Refresh
- xmarsh

Outline

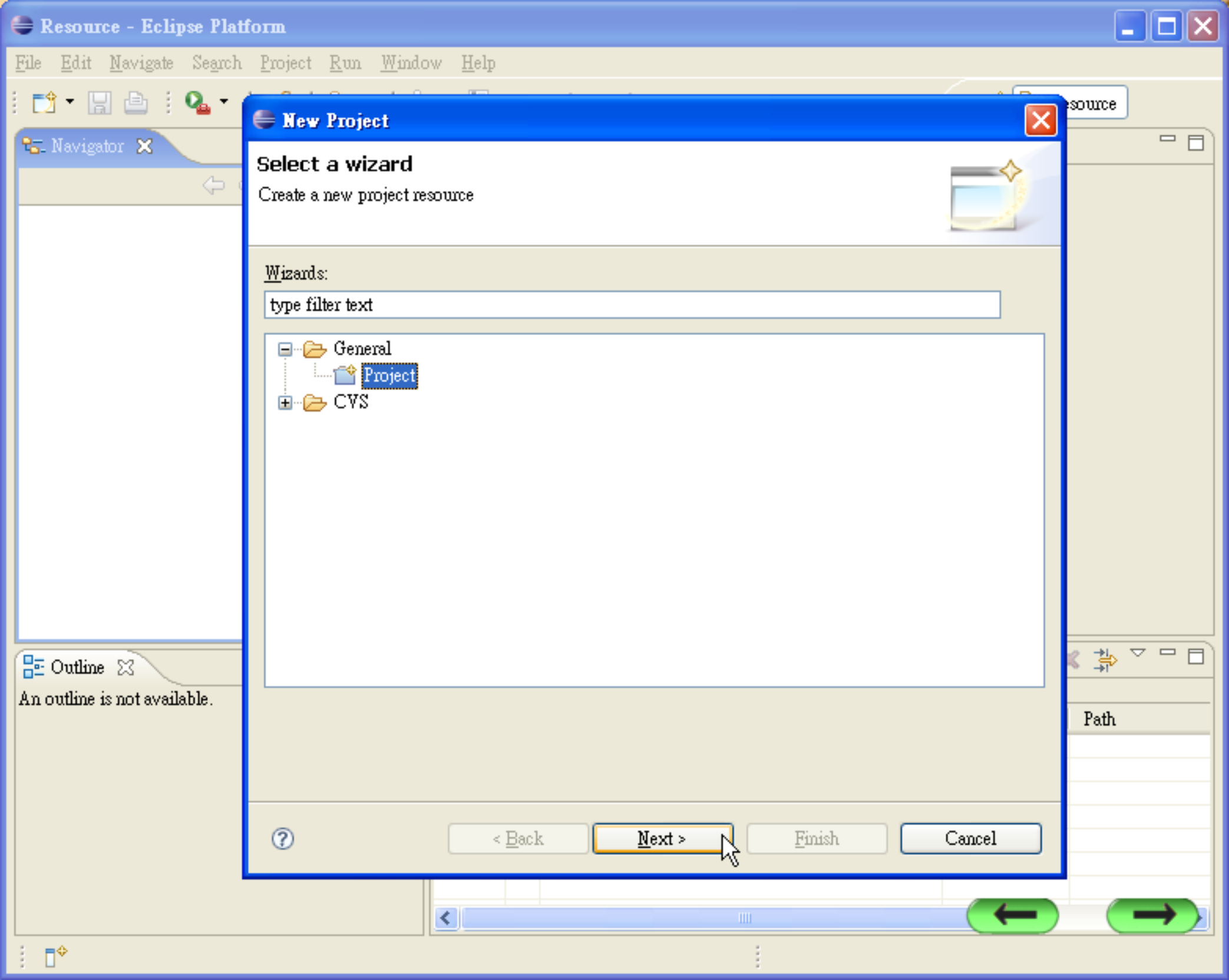
An outline is not available.

Tasks

0 items

✓	!	Description	Resource	Path

Navigation bar with left and right arrow buttons.



New Project

Select a wizard

Create a new project resource

Wizards:

type filter text

- [-] General
 - [+] Project
- [+] CVS



< Back

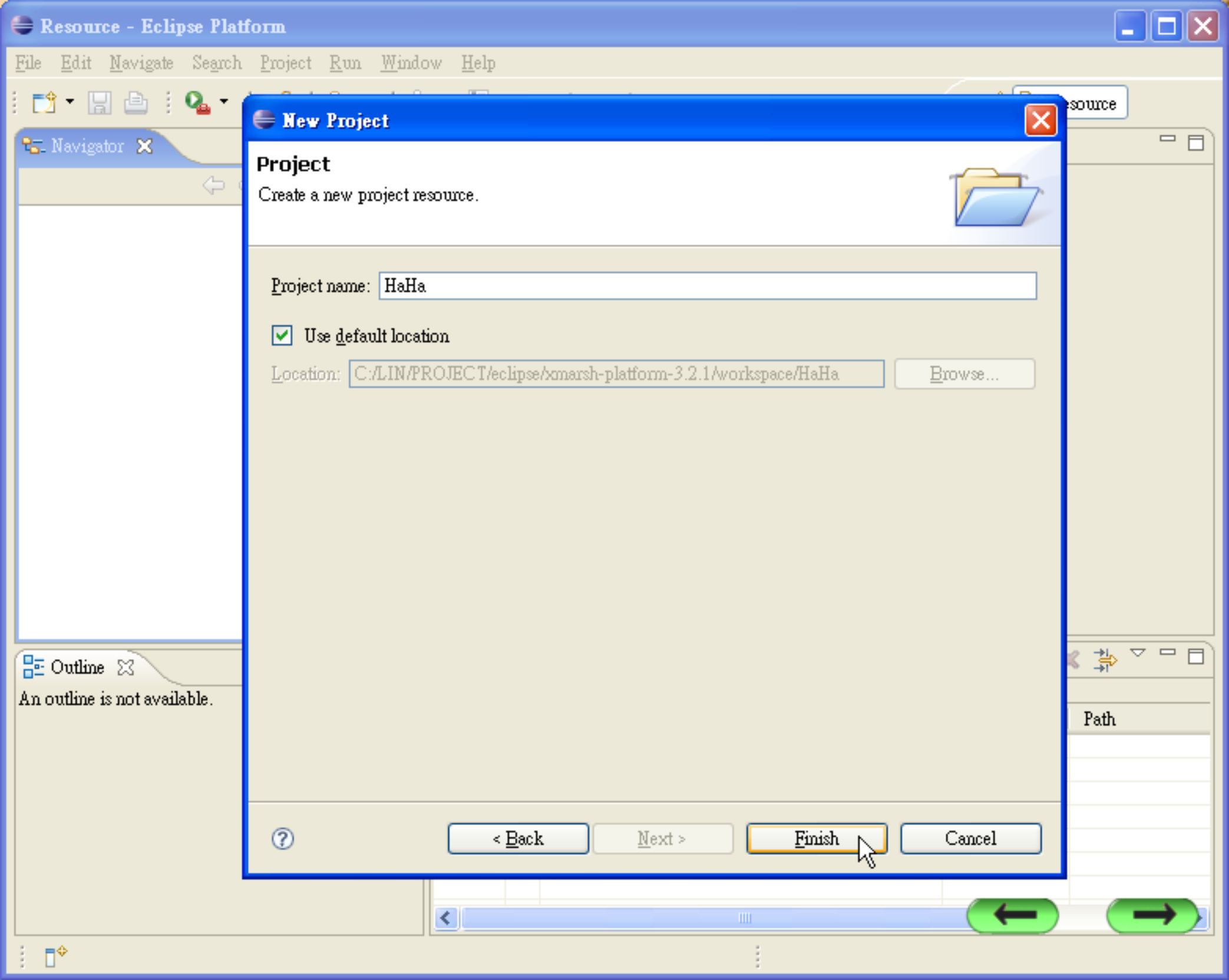
Next >

Finish

Cancel

Outline An outline is not available.

Path



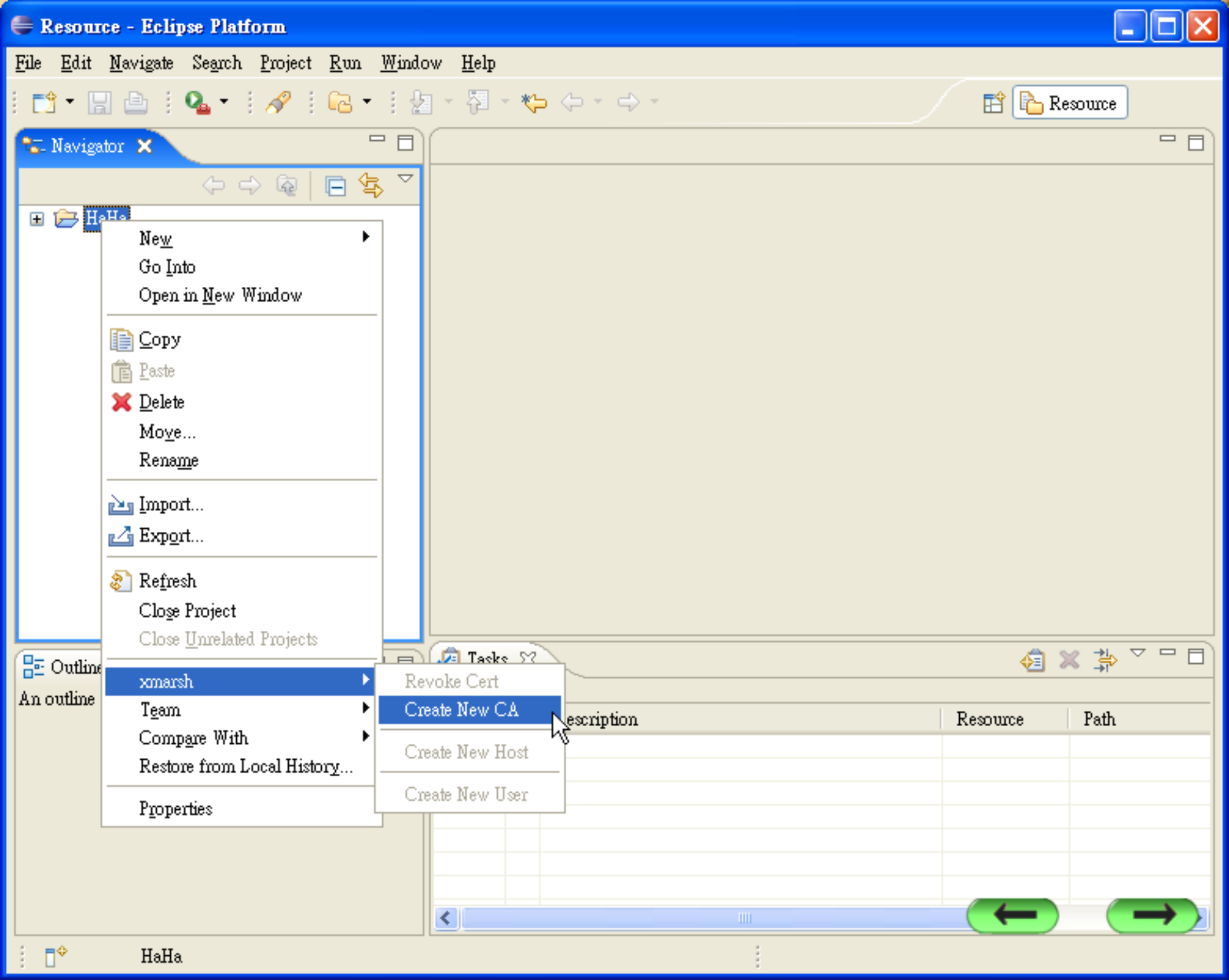
New Project

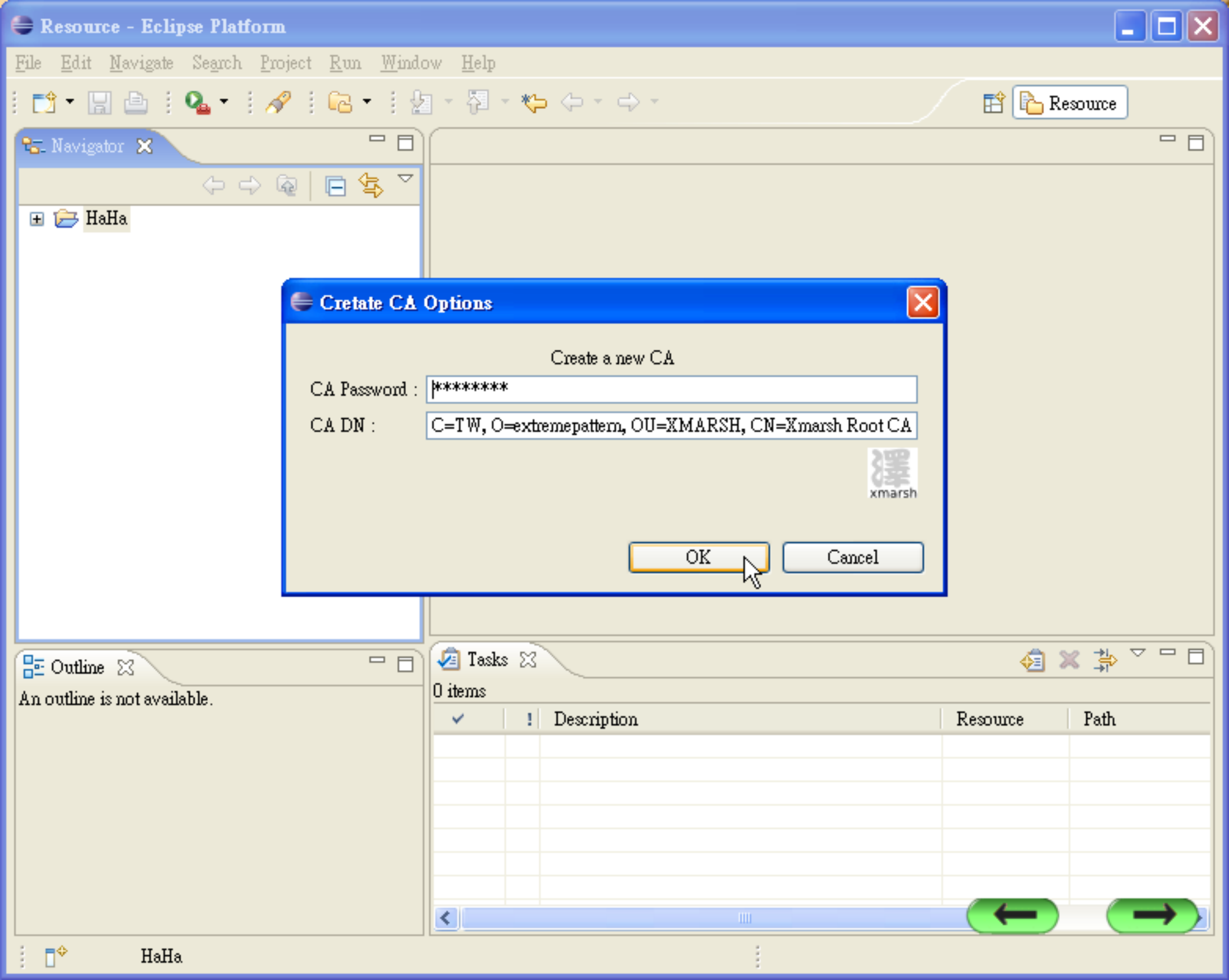
Project
Create a new project resource.

Project name:

Use default location

Location:





Create CA Options

Create a new CA

CA Password : [masked with asterisks]

CA DN : C=TW, O=extremepattern, OU=XMARSH, CN=Xmarsh Root CA

OK Cancel

Navigator

HaHa

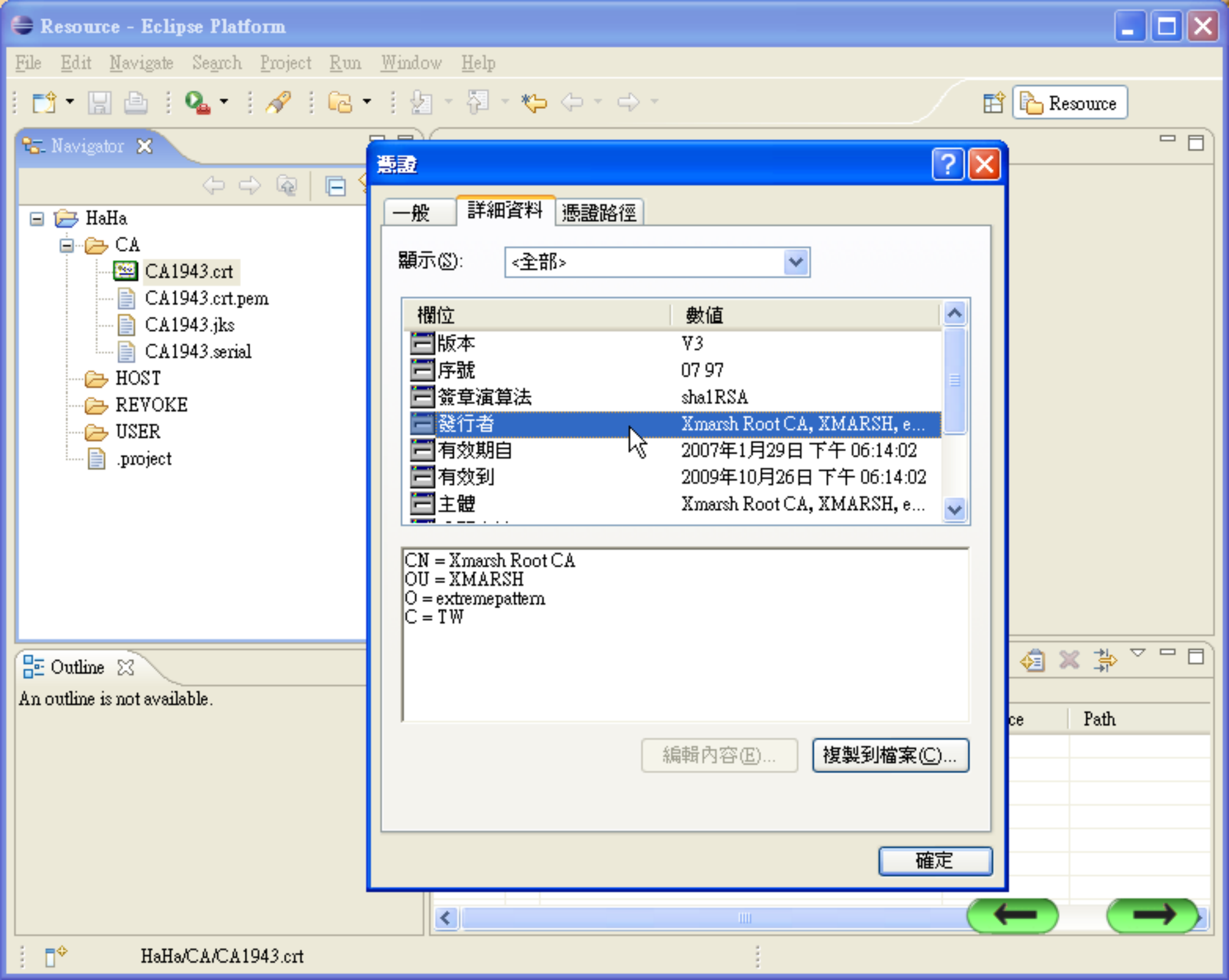
Outline

An outline is not available.

Tasks

0 items

	Description	Resource	Path
✓	!		



Navigator

- HaHa
 - CA
 - CA1943.crt
 - CA1943.crt.pem
 - CA1943.jks
 - CA1943.serial
 - HOST
 - REVOKE
 - USER
 - .project

Outline

An outline is not available.

憑證

一般 詳細資料 憑證路徑

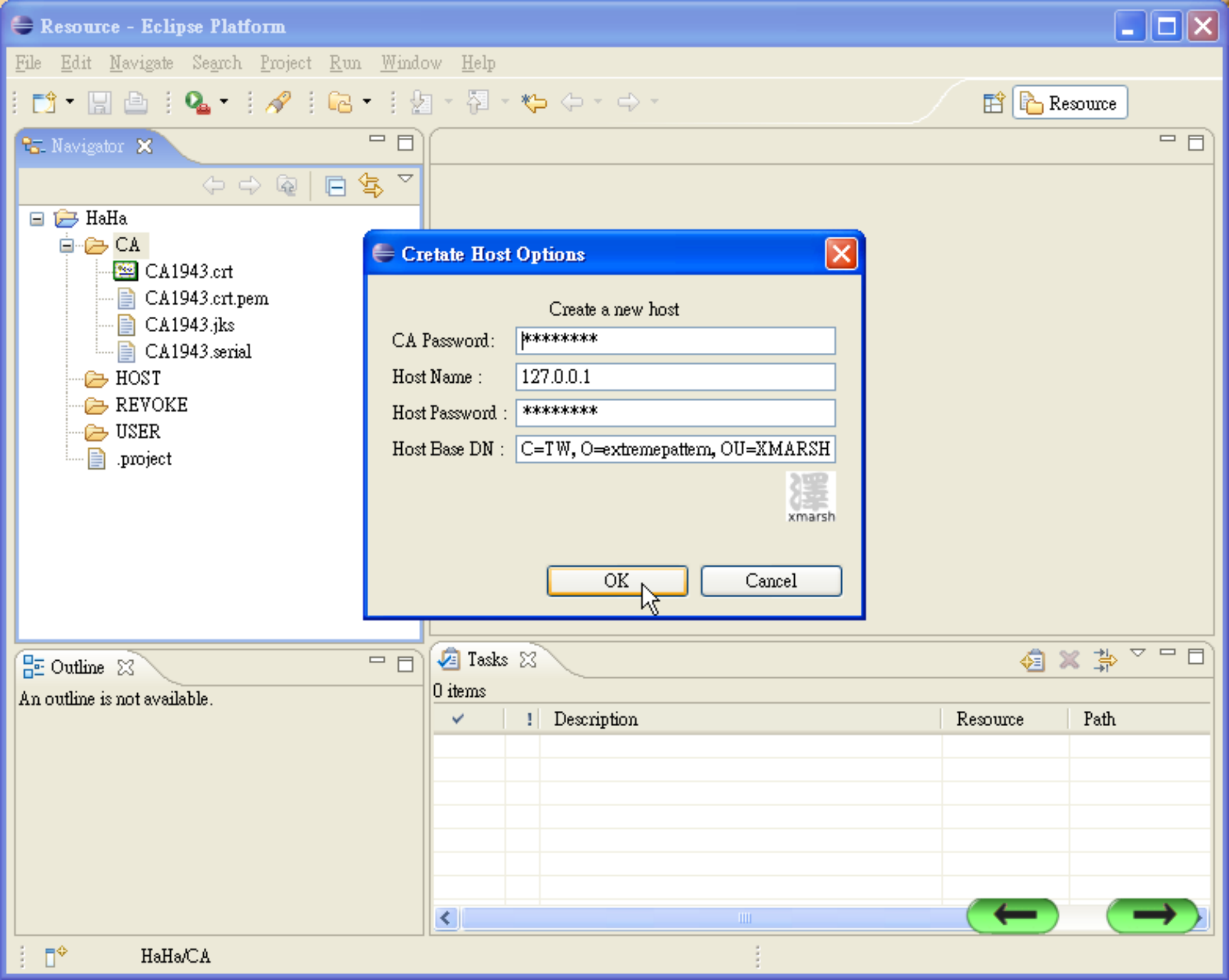
顯示(S): <全部>

欄位	數值
版本	V3
序號	07 97
簽章演算法	sha1RSA
發行者	Xmarsh Root CA, XMARSH, e...
有效期自	2007年1月29日 下午 06:14:02
有效到	2009年10月26日 下午 06:14:02
主體	Xmarsh Root CA, XMARSH, e...

CN = Xmarsh Root CA
OU = XMARSH
O = extreme pattern
C = TW

編輯內容(E)... 複製到檔案(C)...

確定



Create Host Options

Create a new host

CA Password: [*****]

Host Name : [127.0.0.1]

Host Password : [*****]

Host Base DN : [C=TW, O=extremepattern, OU=XMARSH]



OK Cancel

Navigator

- HaHa
 - CA
 - CA1943.crt
 - CA1943.crt.pem
 - CA1943.jks
 - CA1943.serial
 - HOST
 - REVOKE
 - USER
 - .project

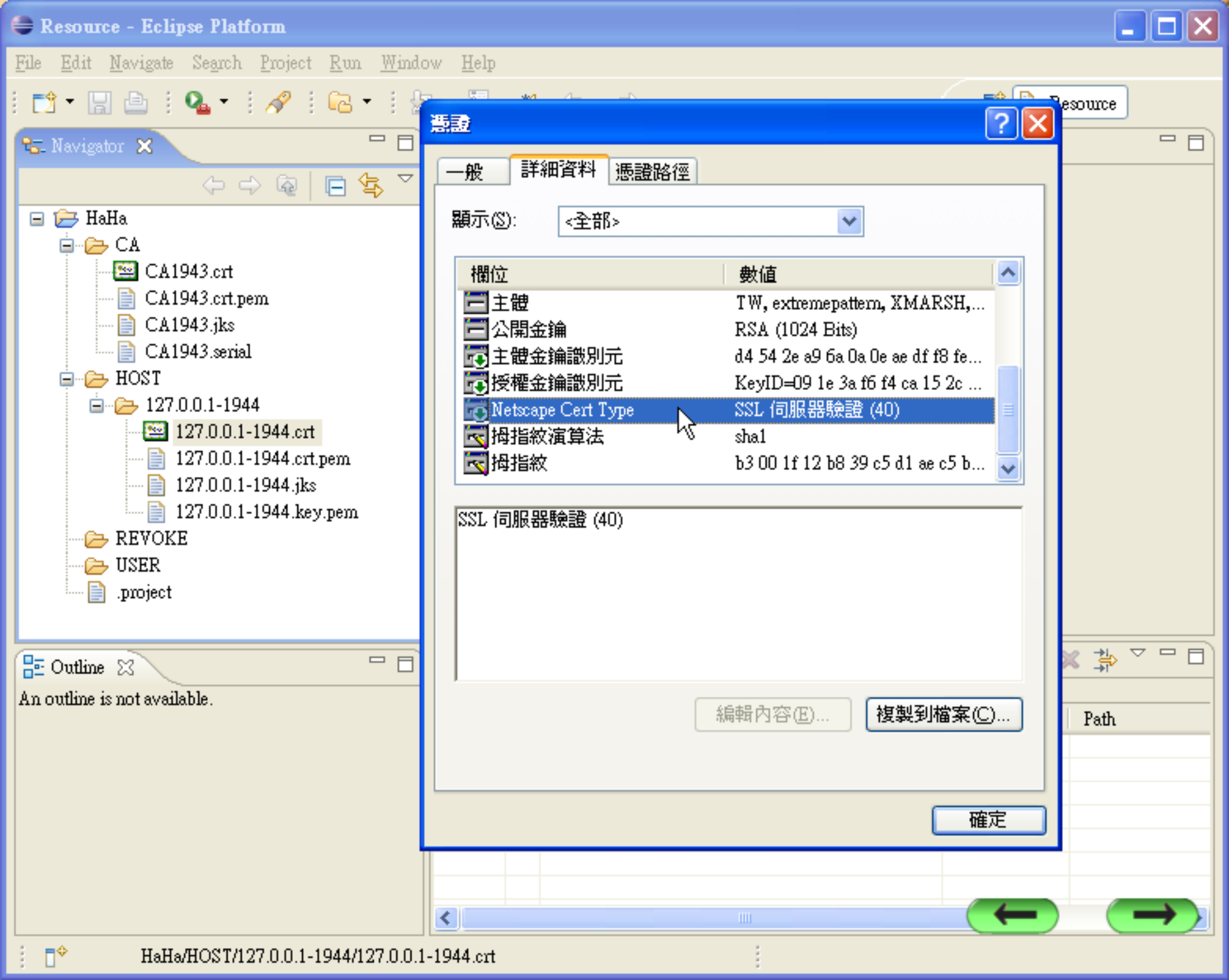
Outline

An outline is not available.

Tasks

0 items

✓	!	Description	Resource	Path



Navigator

- HaHa
 - CA
 - CA1943.crt
 - CA1943.crt.pem
 - CA1943.jks
 - CA1943.serial
 - HOST
 - 127.0.0.1-1944
 - 127.0.0.1-1944.crt
 - 127.0.0.1-1944.crt.pem
 - 127.0.0.1-1944.jks
 - 127.0.0.1-1944.key.pem
 - REVOKE
 - USER
 - .project

Outline

An outline is not available.

憑證

一般 詳細資料 憑證路徑

顯示(S): <全部>

欄位	數值
主體	TW, extremepattern, XMARSH,...
公開金鑰	RSA (1024 Bits)
主體金鑰識別元	d4 54 2e a9 6a 0a 0e ae df f8 fe...
授權金鑰識別元	KeyID=09 1e 3a f6 f4 ca 15 2c ...
Netscape Cert Type	SSL 伺服器驗證 (40)
拇指紋演算法	sha1
拇指紋	b3 00 1f 12 b8 39 c5 d1 ae c5 b...

SSL 伺服器驗證 (40)

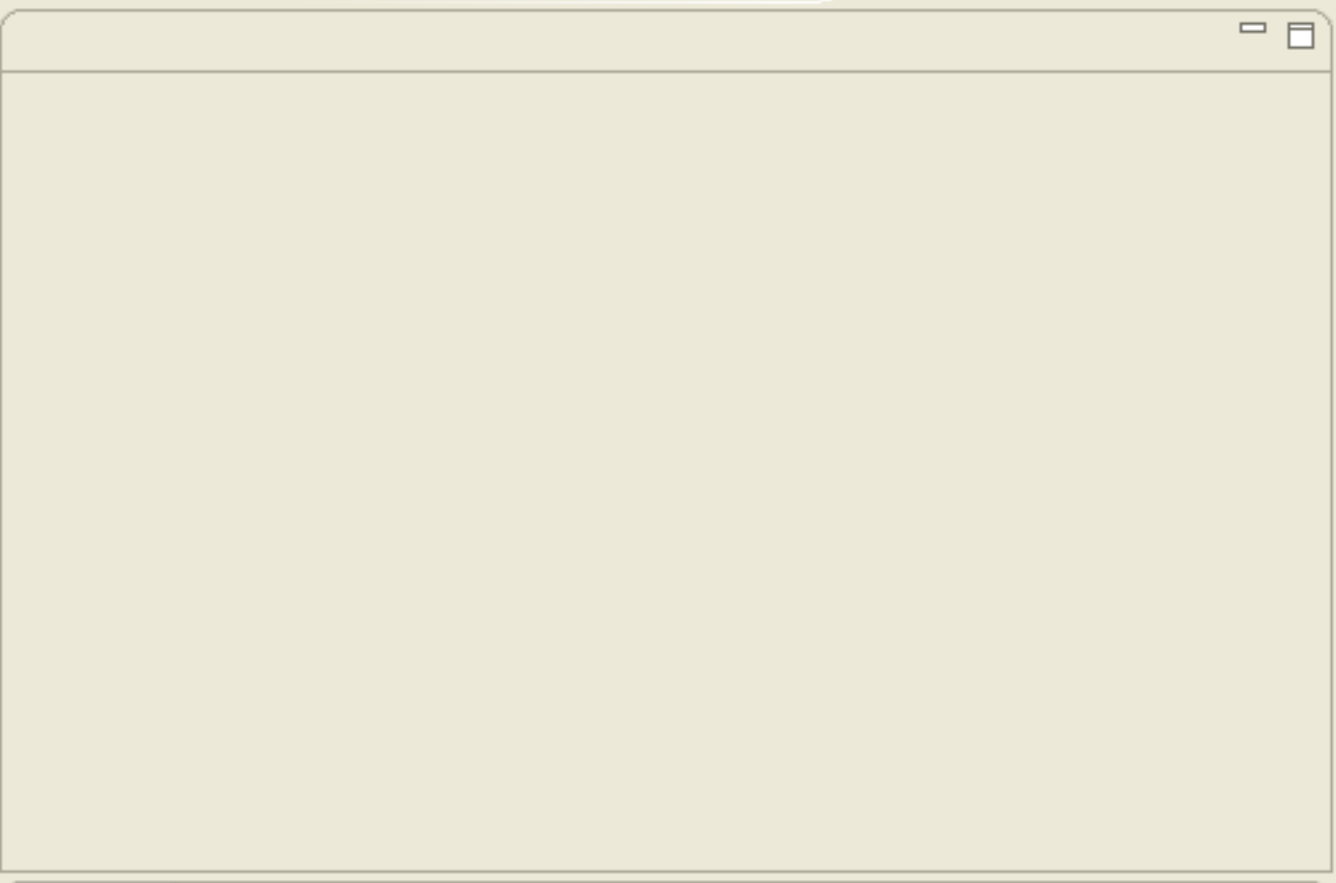
編輯內容(E)... 複製到檔案(C)...

確定



Navigator

- CA1943.crt
- CA1943.crt.pem
- CA1943.jks
- CA1943.serial
- HOST
 - 127.0.0.1-1944
 - 127.0.0.1-1944.crt
 - 127.0.0.1-1944.crt.pem
 - 127.0.0.1-1944.jks
 - 127.0.0.1-1944.key.pem
- REVOKE
- USER
 - LIN-1945
 - LIN-1945.crt
 - LIN-1945.crt.pem
 - LIN-1945.p12



Outline

An outline is not available.

Tasks

0 items

✓	!	Description	Resource	Path



Navigator

- CA1943.crt
- CA1943.crt.pem
- CA1943.jks
- CA1943.serial
- HOST
 - 127.0.0.1-1944
 - 127.0.0.1-1944.crt
 - 127.0.0.1-1944.crt.pem
 - 127.0.0.1-1944.jks
 - 127.0.0.1-1944.key.pem
- REVOKE
- USER
 - LIN-1945
 - LIN-1945.crt
 - LIN-1945.crt.pem
 - LIN-1945.p12

Outline

An outline is not available.

憑證

一般 詳細資料 憑證路徑

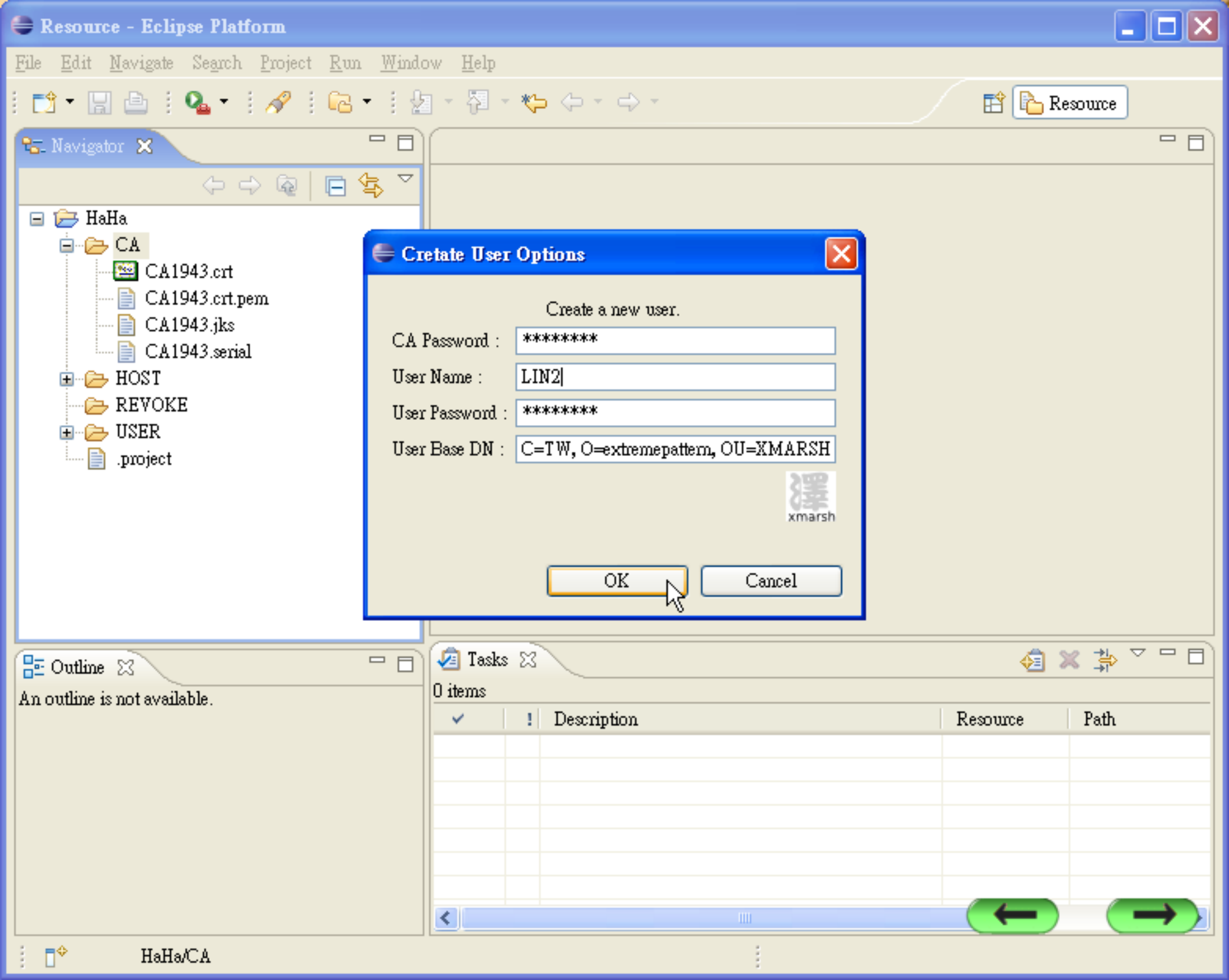
顯示(S): <全部>

欄位	數值
[-] 版本	V3
[-] 序號	07 99
[-] 簽章演算法	sha1RSA
[-] 發行者	Xmarsh Root CA, XMARSH, e...
[-] 有效期自	2007年1月29日 下午 06:15:15
[-] 有效到	2008年1月30日 下午 06:15:15
[-] 主體	TW, extremepattern, XMARSH,...

C = TW
O = extremepattern
OU = XMARSH
CN = LIN

編輯內容(E)... 複製到檔案(C)...

確定



Navigator

- HaHa
 - CA
 - CA1943.crt
 - CA1943.crt.pem
 - CA1943.jks
 - CA1943.serial
 - HOST
 - REVOKE
 - USER
 - .project

Create User Options

Create a new user.

CA Password : *****

User Name : LIN2

User Password : *****

User Base DN : C=TW, O=extremepattern, OU=XMARSH

OK Cancel

Outline

An outline is not available.

Tasks

0 items

✓	!	Description	Resource	Path

Navigator

- HaHa
 - CA
 - CA1943.crt
 - CA1943.crt.pem
 - CA1943.jks
 - CA1943.serial
 - HOST
 - 127.0.0.1-1944
 - 127.0.0.12-1947
 - REVOKE
 - USER
 - LIN-1945
 - LIN2-1946
 - .project

Revoke Certificate 1947 ?

確定 取消

Outline

An outline is not available.

Tasks

0 items

✓	!	Description	Resource	Path

Navigator

- HaHa
 - CA
 - CA1943.crl
 - CA1943.crt
 - CA1943.crt.pem
 - CA1943.jks
 - CA1943.serial
 - HOST
 - 127.0.0.1-1944
 - REVOKE
 - 127.0.0.12-1947
 - USER
 - LIN-1945
 - LIN2-1946
 - .project

Main workspace area, currently empty.

Outline

An outline is not available.

Tasks

0 items

✓	!	Description	Resource	Path

Navigator

- HaHa
 - CA
 - CA1943.crl
 - CA1943.crt
 - CA1943.crt.pem
 - CA1943.jks
 - CA1943.serial
 - HOST
 - 127.0.0.1-1944
 - REVOKE
 - 127.0.0.12-1947
 - USER
 - LIN-1945
 - LIN2-1946
 - .project

Outline

An outline is not available.

憑證撤銷清單

一般 撤銷清單

撤銷憑證 (R):

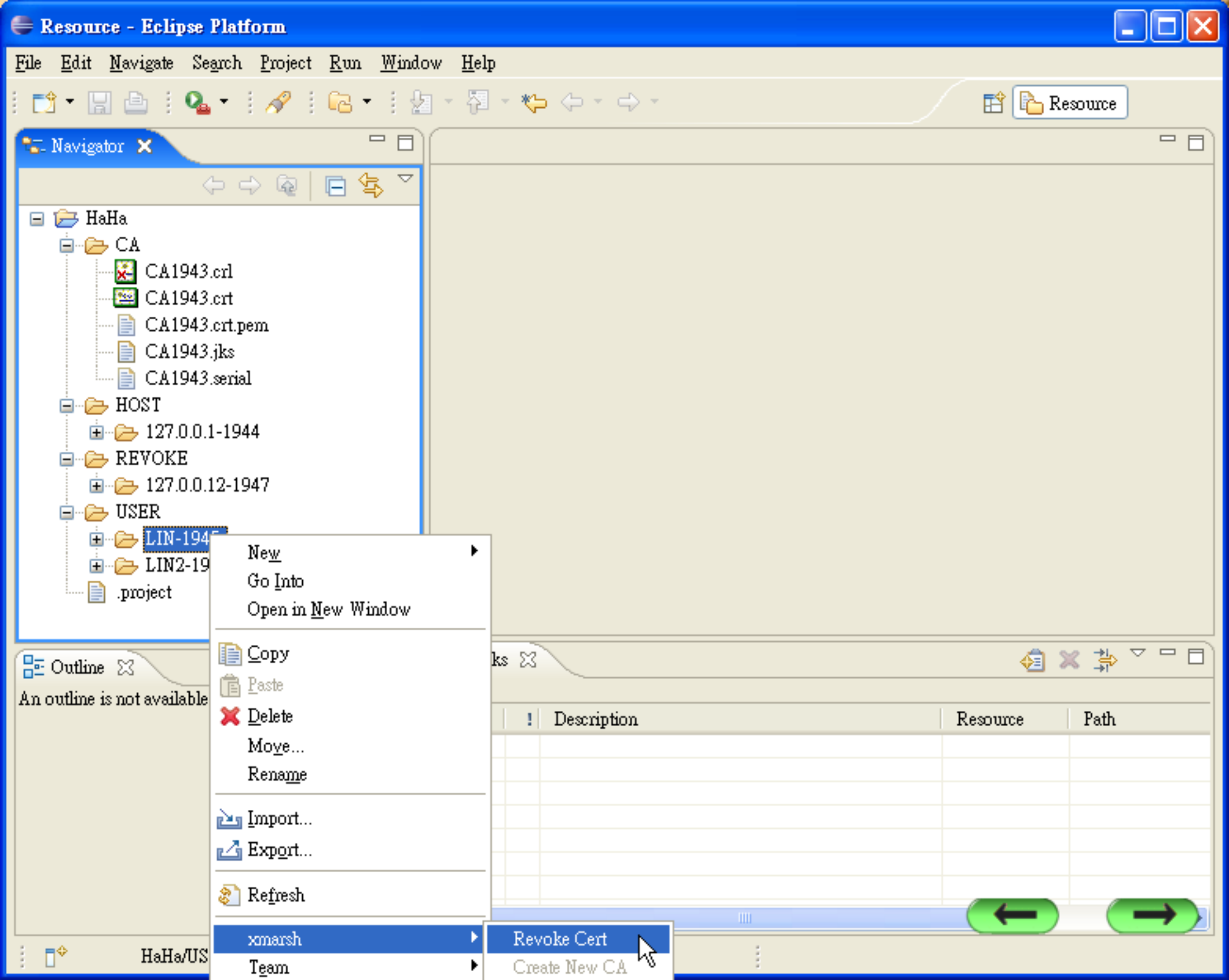
序號	撤銷日期
07 9b	2007年1月30日 下午 0...

撤銷項目

欄位	數值
序號	07 9b
撤銷日期	2007年1月30日 下午 06:17:23
CRL 理由代碼	Unknown CRL reason (9)

值 (V):

確定



Navigator

- HaHa
 - CA
 - CA1943.crl
 - CA1943.crt
 - CA1943.crt.pem
 - CA1943.jks
 - CA1943.serial
 - HOST
 - 127.0.0.1-1944
 - REVOKE
 - 127.0.0.12-1947
 - USER
 - LIN-1945
 - LIN2-1947
 - .project

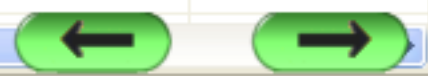
- New
- Go Into
- Open in New Window
- Copy
- Paste
- Delete
- Move...
- Rename
- Import...
- Export...
- Refresh
- xsmarsh
 - Revoke Cert
 - Create New CA
- Team

Outline

An outline is not available

HaHa/US

Description	Resource	Path



Navigator

- HaHa
 - CA
 - CA1943.crl
 - CA1943.crt
 - CA1943.crt.pem
 - CA1943.jks
 - CA1943.serial
 - HOST
 - 127.0.0.1-1944
 - REVOKE
 - 127.0.0.12-1947
 - USER
 - LIN-1945
 - LIN2-1946
 - .project

Revoke Certificate 1945 ?

確定 取消

Outline

An outline is not available.

Tasks

0 items

✓	!	Description	Resource	Path

Navigator

- HaHa
 - CA
 - CA1943.crl
 - CA1943.crt
 - CA1943.crt.pem
 - CA1943.jks
 - CA1943.serial
 - HOST
 - 127.0.0.1-1944
 - REVOKE
 - 127.0.0.12-1947
 - LIN-1945
 - USER
 - LIN2-1946
 - .project

Outline

An outline is not available.

憑證撤銷清單

一般 撤銷清單

撤銷憑證 (R):

序號	撤銷日期
07 9b	2007年1月30日 下午 06:17:23
07 99	2007年1月30日 下午 06:17:59

撤銷項目

欄位	數值
序號	07 99
撤銷日期	2007年1月30日 下午 06:17:59
CRL 理由代碼	Unknown CRL reason (9)

值 (V):

確定